



# GAT MONTHLY MEMBERSHIP PROGRESS REPORT

Results as of: 4/30/2022

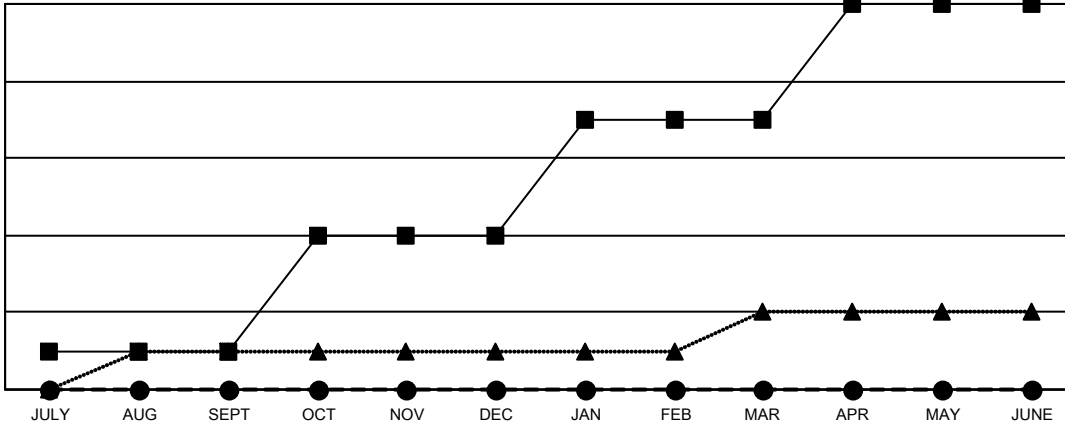
Multiple District 33

LOCATION: MASSACHUSETTS

Clubs			
RESULTS FOR 2021-2022			
QUARTER	NEW CLUB GOAL	NEW CLUBS	DROPPED CLUBS
JULY/AUG/SEPT	1	0	1
OCT/NOV/DEC	3	0	2
JAN/FEB/MAR	3	0	0
APR/MAY/JUNE	3	0	0

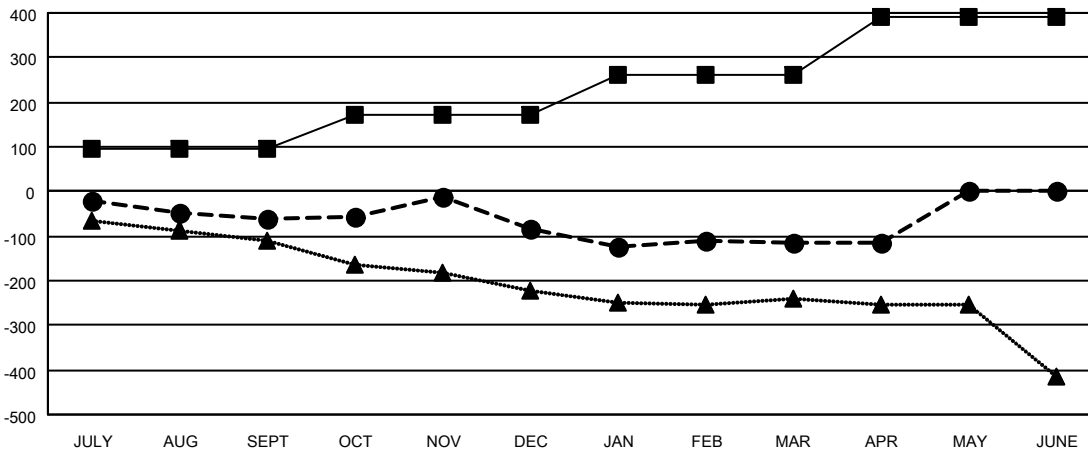
Members			
RESULTS FOR 2021-2022			
QUARTER	MEMBER GROWTH NET GOAL	MEMBER GROWTH ACTUAL	DROPPED MEMBERS ACTUAL (including transfers)
JULY/AUG/SEPT	95	81	128
OCT/NOV/DEC	75	194	204
JAN/FEB/MAR	90	139	125
APR/MAY/JUNE	130	29	30

GOALS AND ACTUAL NEW CLUBS CUMULATIVE



- CURRENT YEAR GOALS FOR NEW CLUBS
- CURRENT YEAR ACTUAL NEW CLUBS
- ▲- LAST YEAR ACTUAL NEW CLUBS

GOALS AND ACTUAL MEMBERS CUMULATIVE



- MEMBER GROWTH NET GOAL
- MEMBER GROWTH ACTUAL
- ▲- LAST YEAR MEMBERSHIP ACTUAL

DROPPED CLUBS: 3	
<b>DROPPED MEMBERS</b>	
DECEASED	97
CLUB CANCELLED	35
OTHER	355
<b>TOTAL</b>	<b>487</b>

109 CLUBS OF 215 ADDED 1 OR MORE NEW MEMBERS

[CLICK HERE FOR CUMULATIVE MEMBERSHIP DATA](#)

GENDER DISTRIBUTION	
MALE	4,064 (63.20%)
FEMALE	2,364 (36.77%)
NON BINARY	0 (0.00%)
PREFER NOT TO ANSWER	2 (0.03%)
<b>TOTAL FAMILY UNIT MEMBERS</b>	<b>1,069</b>
<b>FAMILY MEMBERS PAYING HALF DUES</b>	<b>544</b>